

GLV mini Lidar

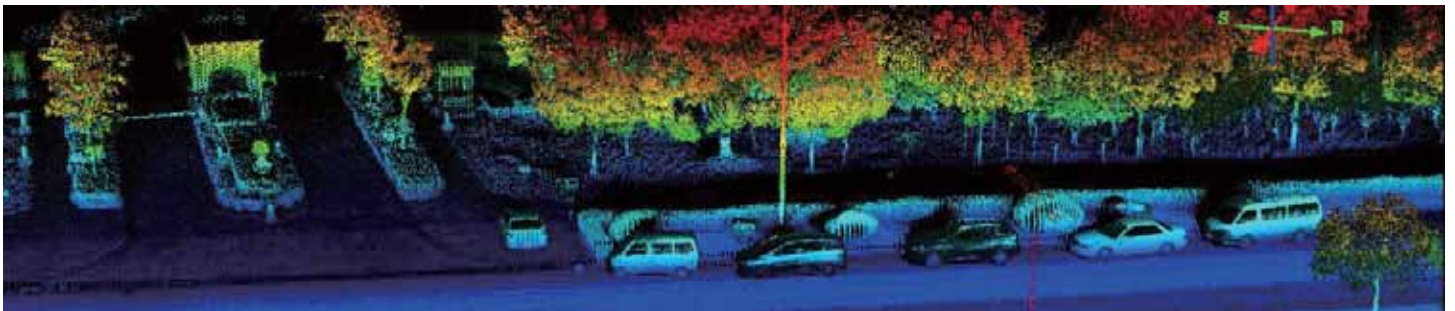


- *300khz Pulse rate, 16 laser heads*
- *360 deg FOV*
- *1-20hz scan rate*
- *MEMS IMU*
- *20mp calibrated camera*
- *Rugged system controller*
- *Autonomous operation*
- *One button startup*
- *Weights 2.3kg*
- *Fits in one small pelican case*
- *Operating range up to 80m*
- *Up to 100+pts/m²*
- *Install in minutes*

GLV is a mini Lidar system specially designed to meet the market need for Multi-copters. Consists of Velodyne VLP-16 scanner, a 20mp mini camera, a suitable POS system and Geo-info proprietary control unit, this 2.3kg Lidar system is a perfect tool for low altitude small area and corridor mapping. Easy-to-install-and-operate feature ensures this baby Lidar system to generate desirable result even with little training. Coupled with Geo-LAS software to process the acquired data, measurable terrain models can be derived in very short time.

Typical applications:

- Small area and corridor 3D data acquisition
- Terrain modelling for precision farming
- Stockpiles & volumetric calculations
- Historical site modelling
- Other corridor mapping
- Rapid and accurate distance measuring



GLV Specifications

Item	Specification
Laser class	1 class, eye safe
Wave length	Near Infrared
Laser beam divergence angle	3 mrad
Scanning range	0.5m to 100m
Scanning angle	User selectable to 360deg
Pulse rate	300KHz
Point density	Up to 100+pts/m ²
Scanning mechanism	Rotating laser head
Pitch/Roll accuracy	0.006 deg
Heading accuracy	0.019 deg
Control unit	Win 8 GL system controller
Storage capacity	128GB
Single scanning swath	Up to 200m
Image sensor type	CMOS APS-C
Image dimension	20.1MP
Effective operating range	conductors: 20-30m/other objects: 80m
Voltage	12 - 30V
Power consumption	57W (Max.)
Dimension (L×W×H)	19cm×14.4cm×12cm
Weight	2.3kg
Working temperature	0°C to 40°C
Storage temperature	- 10°C to 50°C

