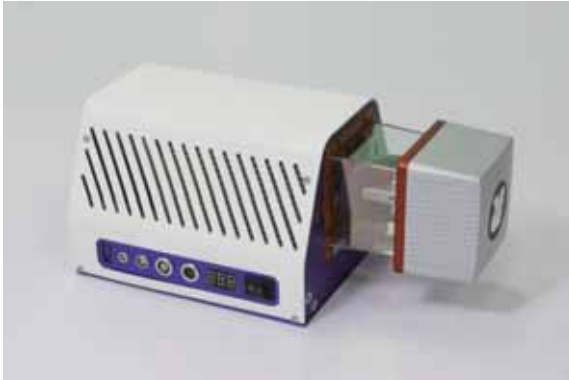


GLR Data Sheet



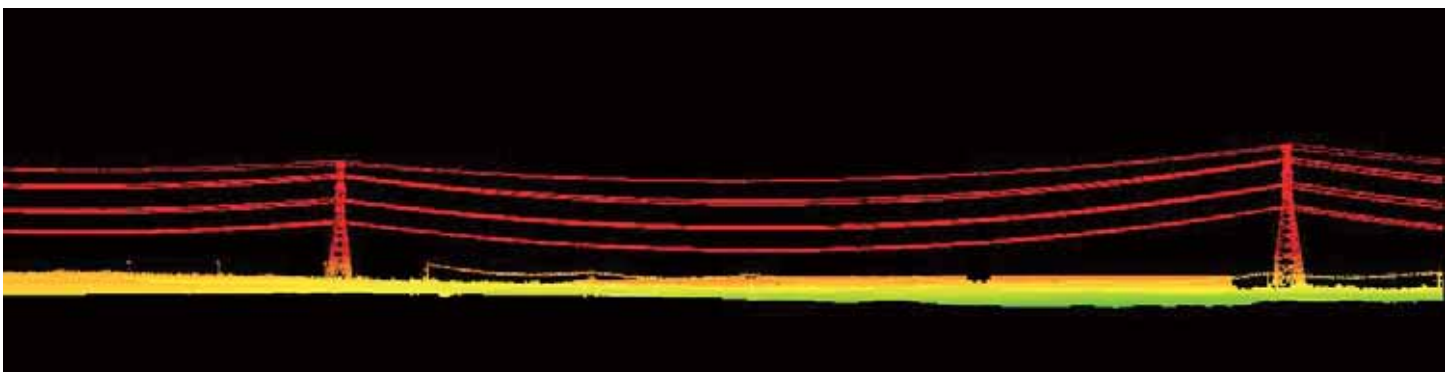
GLR is Geo-info's newly-developed compact Lidar system based on Riegl's mini VUX-1UAV. It weighs only 2.5kg, using surveying grade IMU/GPS solution to calculate the positions and Geo-info system controller with its proprietary software to automatically collect and real-time process data. The algorithm that we use to process precise positions and generate 3D data for all objects above ground is proven high-accurate by surveying & Mapping third parties.

- *100khz Pulse rate*
- *360 deg FOV*
- *1-100hz scan rate*
- *MEMS IMU*
- *intelligent system controller*
- *Autonomous operation*
- *One button startup*
- *real-time data processing*
- *Weights 2.5kg*
- *Fits in one pelican case*
- *Operating range 100m*
- *Up to 100pts/m²*
- *Quick release mounting design*

GLR is easy to transport, easy to install, easy to operate and easy to generate 3D data. It is a perfect tool for rapid and accurate 3D data for small areas, either on electronic multi-copters or other flying objects.

Typical applications:

- Powerlines inspection/danger tree analysis
- River banks, coastal lines mapping
- Water resources monitoring
- Quick response mud slide analysis
- High accuracy small area mapping
- Other 3D data applications



GLR Specifications

Item	Specification
Laser class	1 class, eye safe
Wave length	Near Infrared
Laser beam divergence angle	0.5 mrad
Scanning range	5m to 250m
Scanning angle	User selectable to 360deg
Pulse rate	100KHz
Point density	Up to 100pts/m ²
Scanning mechanism	Rotating mirror
Pitch/Roll accuracy	0.006 deg
Heading accuracy	0.019 deg
Control Unut	Win 10 GL system controller
Storage capacity	256GB
Single scanning swath	Up to 250m
Effective operating range	conductors: 70m/other objects: 250m
Voltage	12 - 30V
Power consumption	45W (Max.)
Dimension (L×W×H)	25cm×15.5cm×11.5cm
Weight	2.5kg
Working temperature	0°C to 40°C
Storage temperature	- 10°C to 50°C

