

GL-50 Compact Lidar System



Major technical specs:

- ❖ 820kHz pulse rate
- ❖ 1350m range
- ❖ 330 °FOV
- ❖ 1-200hz scan rate
- ❖ Geo system controller
- ❖ Huge capacity of storage
- ❖ Weighs only 4.3kg
- ❖ Easy to stall and operate
- ❖ Suitable for long distance and big area mapping

GL-50, a typical Geo-info designed and very compact Lidar system integrated with Riegl VUX-1LR and mid-grade IMU/GPS unit. It weighs only 4.3kg, suitable for mounting on small UAV platforms, especially on vertical take-off fixed-wing UAVs, to acquire laser data for big areas mapping. Mounting on UAV platform is extremely simple due to its clean and clever design. GL-50 is easy to operate, equipped with Geo-info's proprietary system controller and 8 hours of storage capacity, it is a perfect choice for big 1:2000 mapping projects.

Typical Applications:

Long distance mapping/big area mapping
/coastal line monitoring/land planning/
city planning/water resources monitoring
/land slide analysis

Features:

- Patent granted integration technology;
- Compact, clean and clever design;
- Weighs only 4.3kg, suitable for various UAV platform, especially vertical take-off fixed-wing;
- IMU accuracy: pitch/roll 0.006° , heading 0.019° ;
- Support GPS、GLONASS、Beidou and Galileo navigation systems;
- Operation is easy to learn, takes only one hour to master;
- Huge storage capacity, high efficiency;
- Use Geo-LAS to process point cloud, easy and fast;
- Data format can be converted to any industrial standard format;
- Perfect match for long distance and big area mapping.

Geo-info Technologies Co. Ltd.

Suite B1138, 368 Liuhe Road, Binjiang District,
Hangzhou, China 310011

Phone: +86571-81185691

www.geo-info.cn



GEO-INFO



GL-50 Technical Parameters

Module	Item	Specifications
Scanner	Laser class	Class 1, eye safe
	Wave length	Near infrared
	Laser beam divergence angel	0.5 mrad
	Range	5m to 1350m
	Scanning angel	Selectable, max 330°
	Pulse rate	820KHz
	Scanning mechanism	Rotating mirror
POS	Pitch/roll accuracy	0.006°
	Heading accuracy	0.019°
	Data rate	125Hz
	Navigation system supported	GPS、GLONASS、GALIEO、Beidou
Control unit	System controller	Win 8 GL controller
	Storage	Support 8 hours of data collection
Efficiency	Scanning swath	Up to 1500m
	Area	100km ² of 1:2000 scale mapping in one mission
Whole system	Voltage	12 - 30V
	Power consumption	85W (Max.)
	Dimension (L×W×H)	27.5cm×18cm×12.5cm
	Weight	4.3kg
	Working temperature	0°C to 40°C
	Store temperature	- 10°C to 50°C

Geo-info Technologies Co. Ltd.

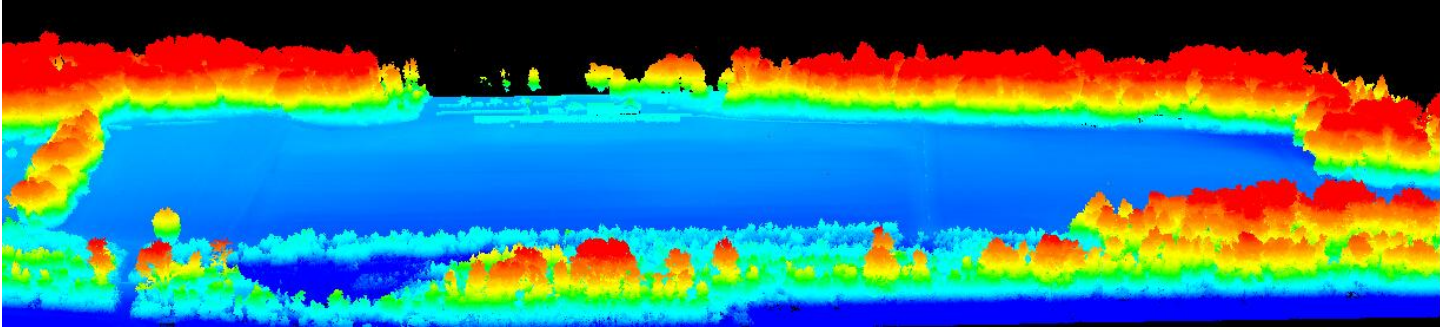
Suite B1138, 368 Liuhe Road, Binjiang District,
Hangzhou, China 310011

Phone: +86571-81185691

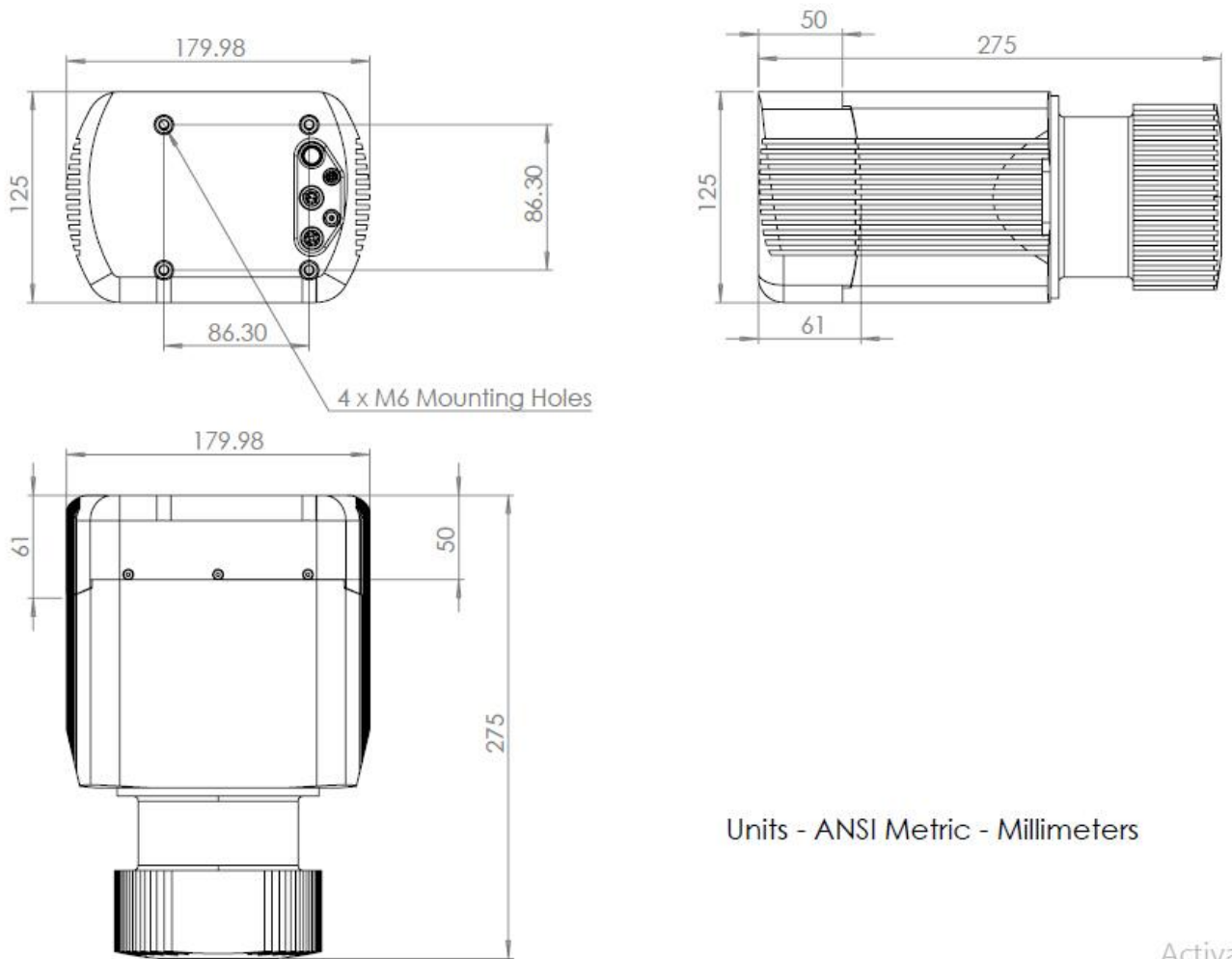
www.geo-info.cn



GEO-INFO



GL-50 Drawing



Activate

Remark: all data is subject to change without notice.

Geo-info Technologies Co. Ltd.

Suite B1138, 368 Liuhe Road, Binjiang District,
Hangzhou, China 310011

Phone: +86571-81185691

www.geo-info.cn



GEO-INFO