

GLQ_Plus mini Lidar system



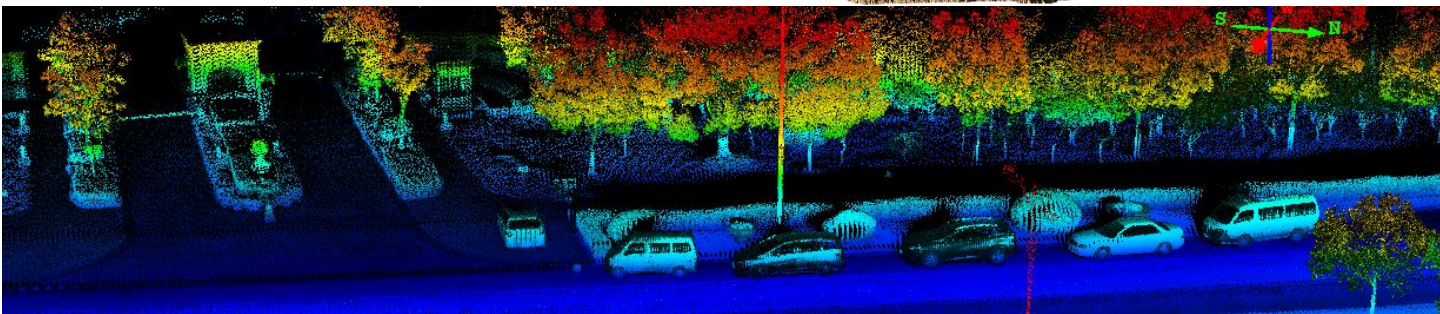
- **400khz, 8 lasers**
- **200m range**
- **360 ° FOV**
- **5-20hz scanning speed**
- **MEMS IMU**
- **20mp calibrated camera**
- **Intelligent control system**
- **Easy to operation, one button to start**
- **Weighs only 2 kg, easy to transport**
- **point density up to 200+pts/m²**
- **Easy to mount, suitable for most drones**
- **Support real time 3D RGB laser function**

GLQ_Plus is a turnkey mini Lidar system consisting of M8 laser scanner, mid-accuracy IMU/GPS, 20mp camera and Geo controller. It weighs 2kg, suitable for all kinds of multi-drones or other carrying platforms. This mini Lidar system can be used for small area mapping or corridor mapping for applications i.e. powerline inspection, open pit modelling, irregular volume calculation etc. 3D laser point cloud can be quickly generated using Geo-LAS right after the flight. Moreover, Geo-RT provides you a real-time point cloud solution if needed. GLQ is a handy and affordable Lidar solution for high accuracy 3D modelling.



Applications:

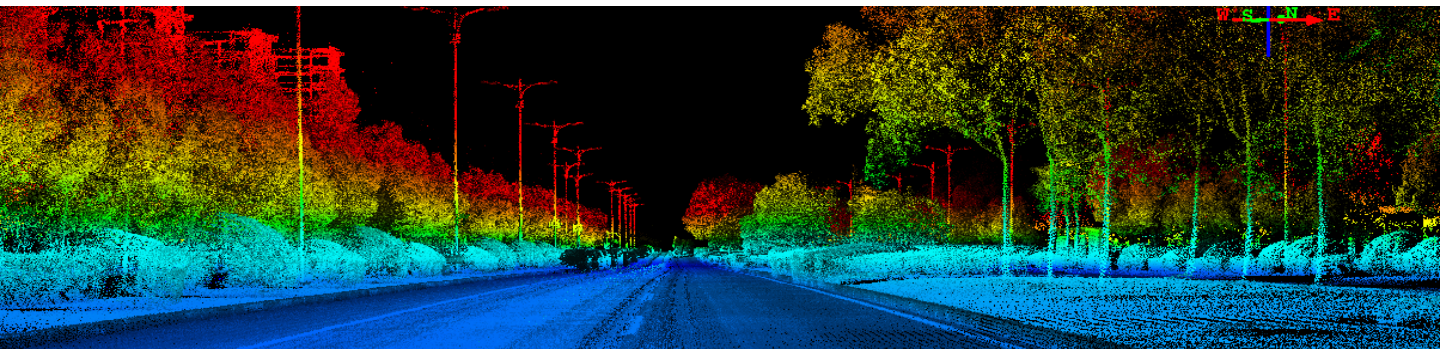
- Powerline inspection
- Small area rapid 3D modelling
- Terrain modelling for heavy vegetation area
- Accurate terrain modelling for agriculture
- Rapid and accurate volume calculation
- Historical site digitizing
- Other corridor mapping





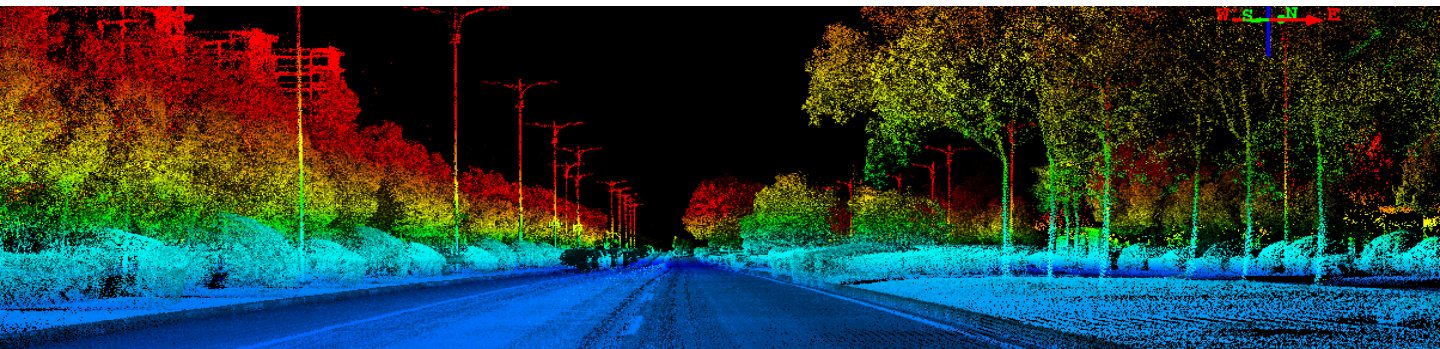
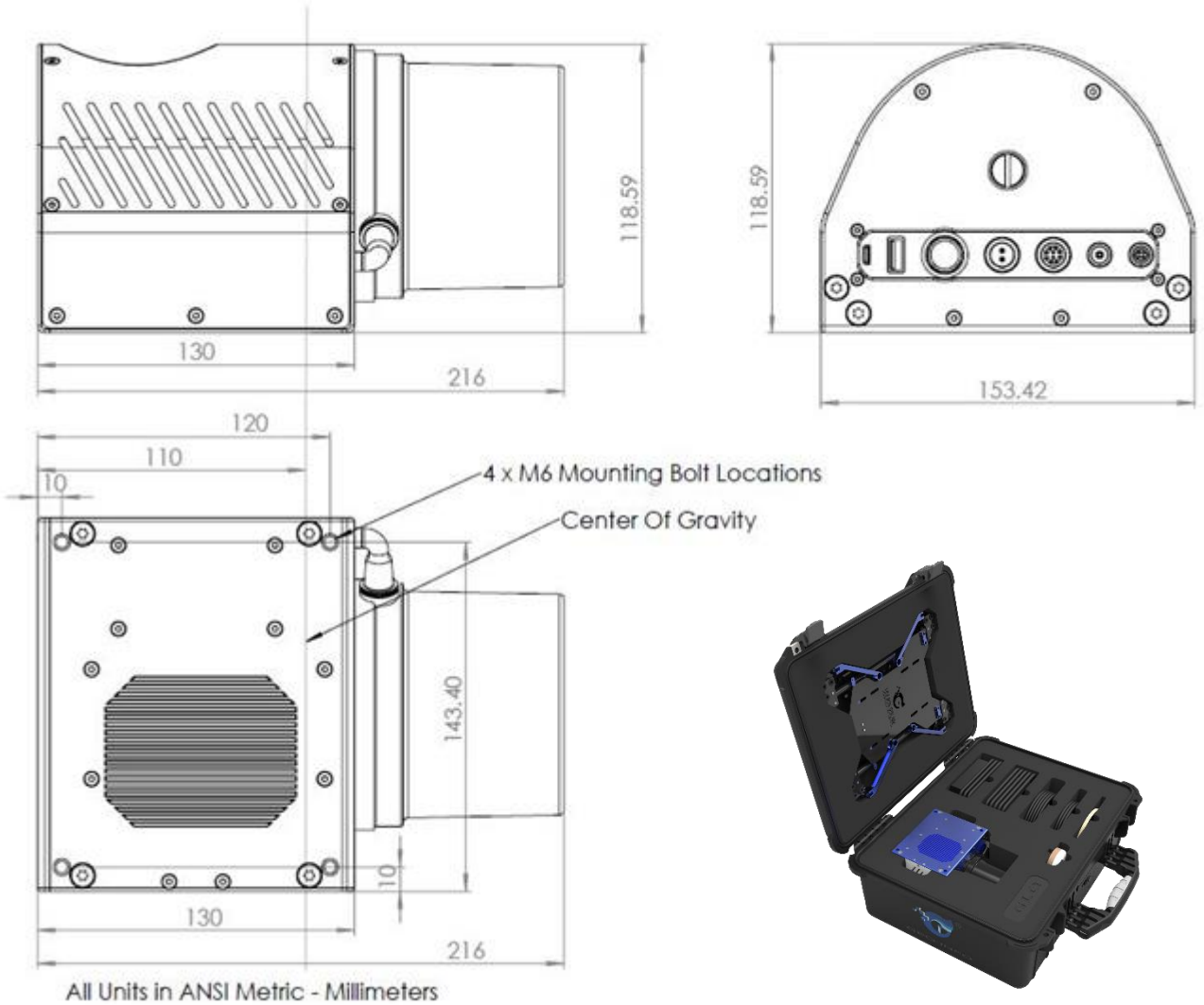
GLQ_Plus Technical Parameters

Item	Specification
Laser class	1 class, eye safe
Wave length	Near Infrared
Laser beam divergence angle	3 mrad
Scanning range	Up to 200m (80% reflectivity)
Scanning angle	User selectable to 360deg
Pulse rate	400KHz
Point density	Up to 200+pts/m ²
Scanning mechanism	Rotating laser head
Pitch/Roll accuracy	0.05 deg
Heading accuracy	0.10 deg
Recording media	Win 8 system controller
Storage capacity	128GB
Single scanning swath	Up to 200m
Image sensor type	CMOS APS-C
Image dimension	20.1MP
Effective operating range	conductors: 40m/other objects: 120m
Voltage	12 - 30V
Power consumption	57W (Max.)
Dimension (L×W×H)	216mm×154mm×119mm
Weight	2kg
Working temperature	- 20°C to 60°C
Storage temperature	- 40°C to 70°C



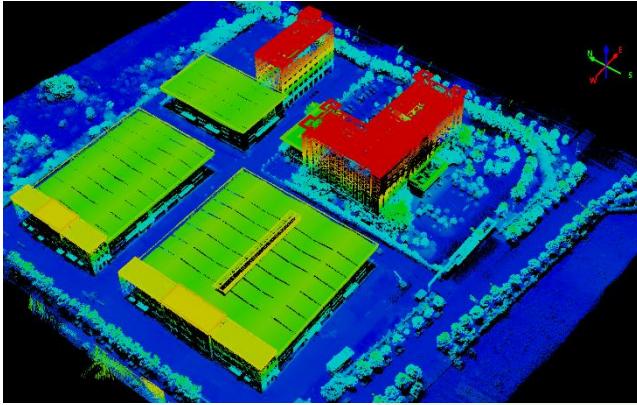


GLQ_Plus Drawing

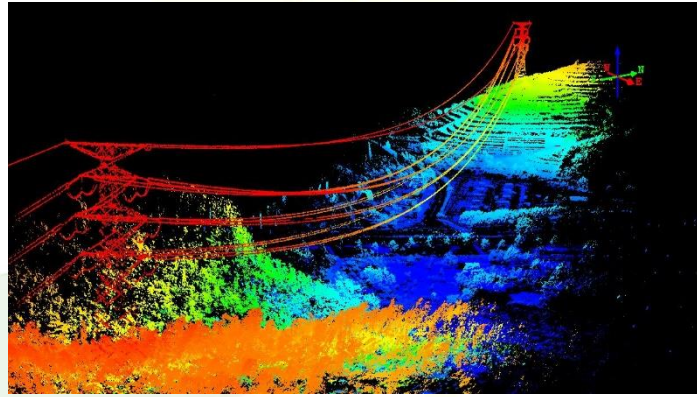




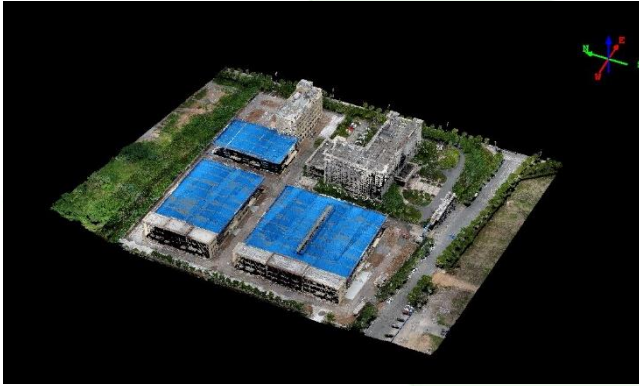
GLQ_Plus Sample Data



Building laser point cloud



Powerline laser point cloud



Building laser point cloud with RGB value



Powerline laser point cloud with RGB value

Note: all parameters are subject to change by manufacturer without notice.

